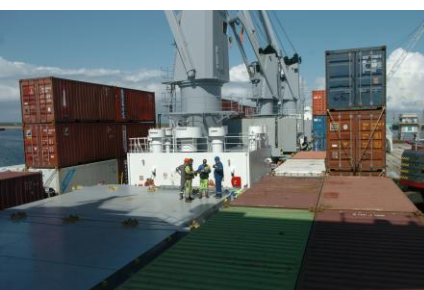


# Europe and Communauté urbaine de Dunkerque

**20 years of  
partnership**

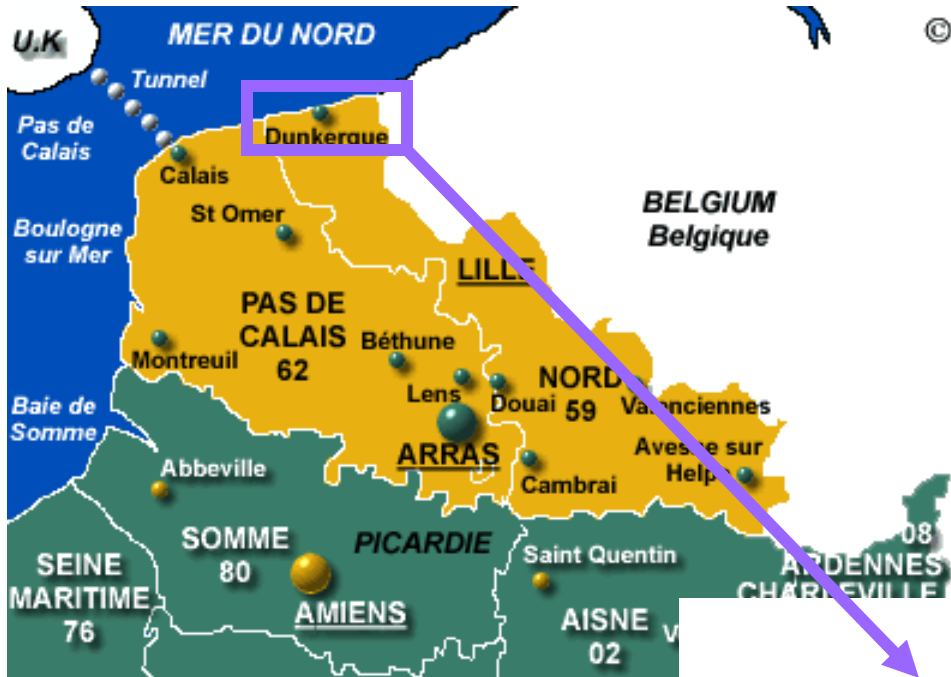


# Where is Dunkirk?

- At the heart of North Western Europe
- Hyphen between The Channel and the North Sea
- Next to Great Britain and Belgium



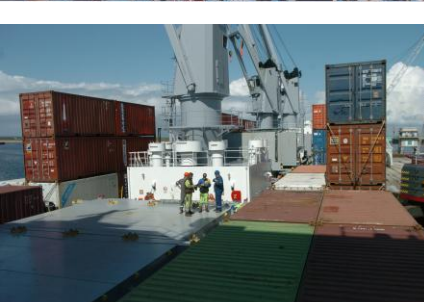
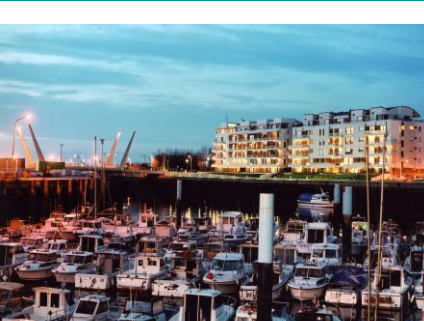
# Where is Dunkirk?



Source : <http://www.francekeys.com/images/npc.gif>

16 towns on the sea shore





# How is Dunkirk?

*200 000 inhabitants*

13 km of coast

**Economic  
reconversion**

3rd French seaport

5th European  
seaport

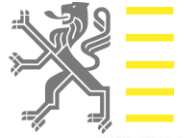
*1st energetic  
platform in Europe*

18 towns

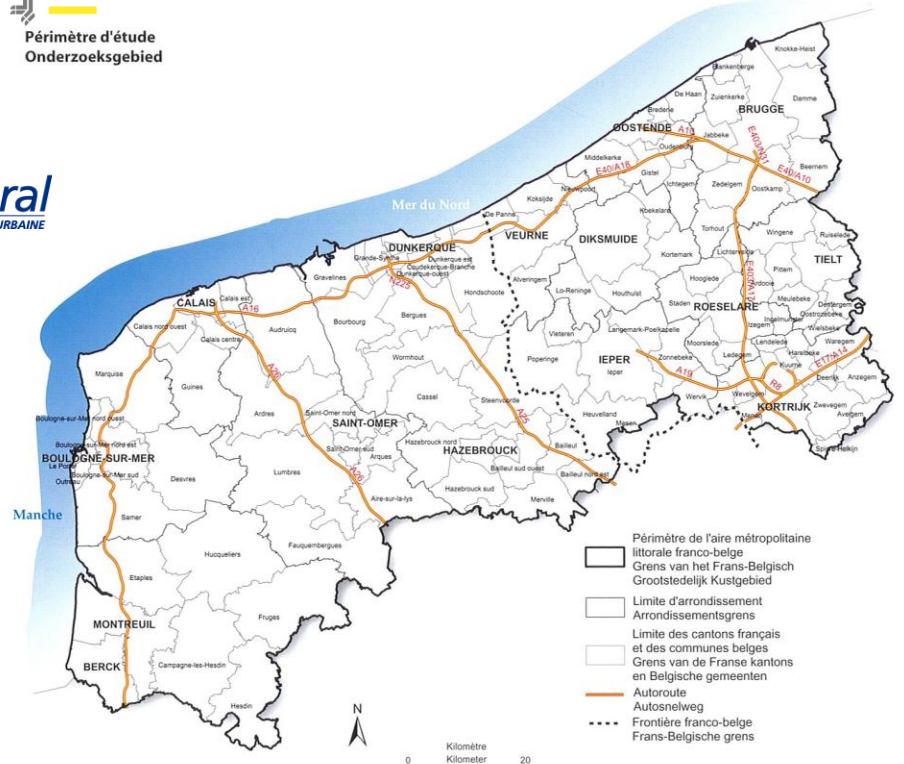
**Brownfields in city  
center**

# The EGCT

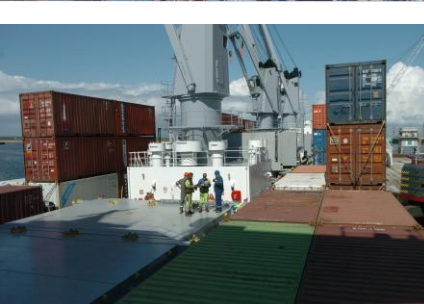
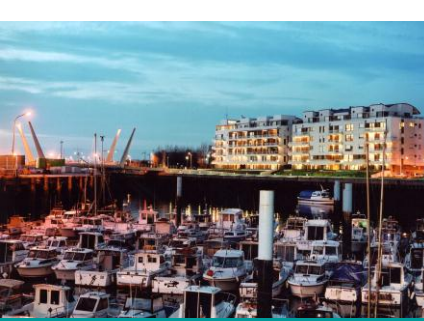
Vlaamse overheid



Périmètre d'étude  
Onderzoeksgebied

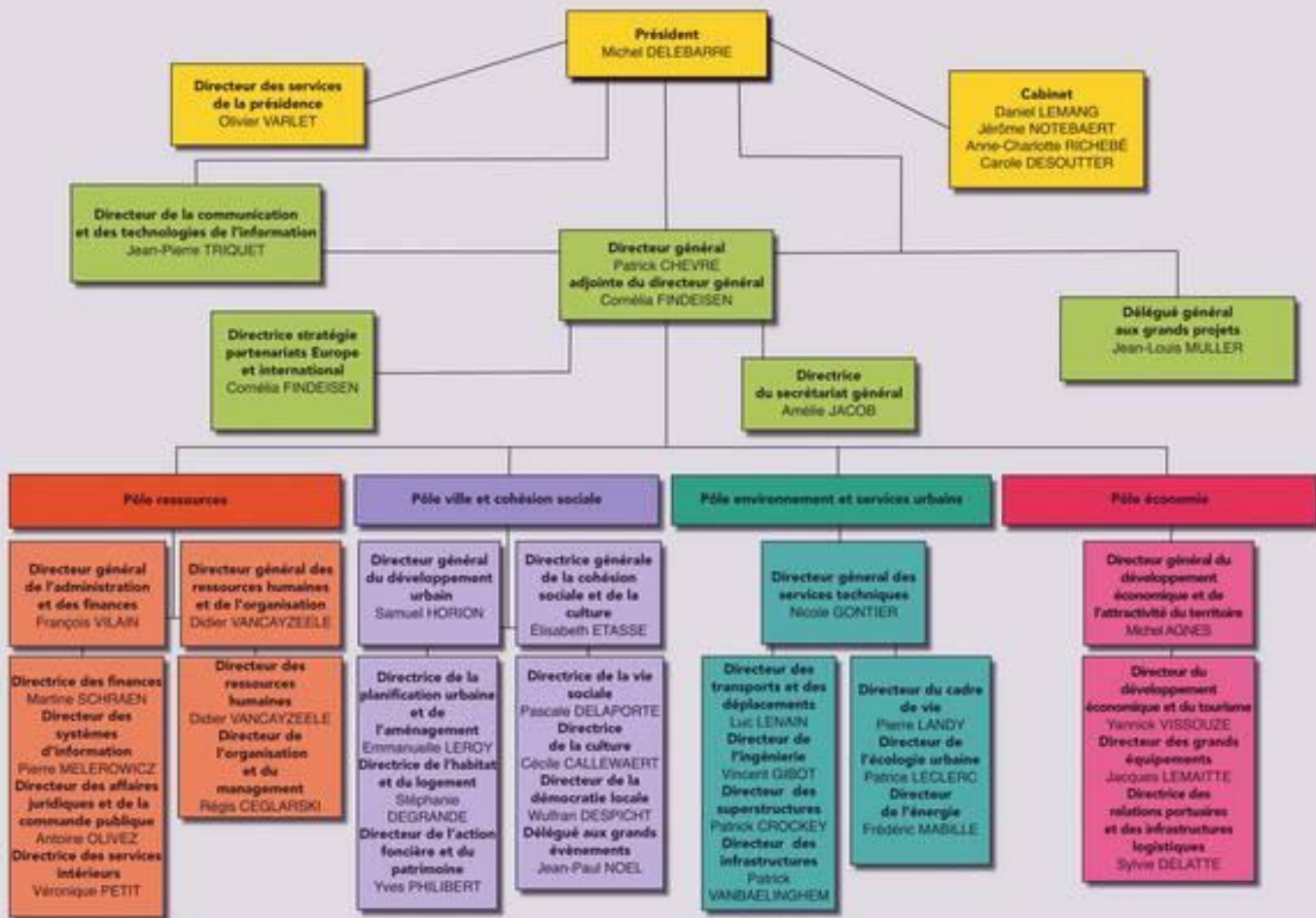


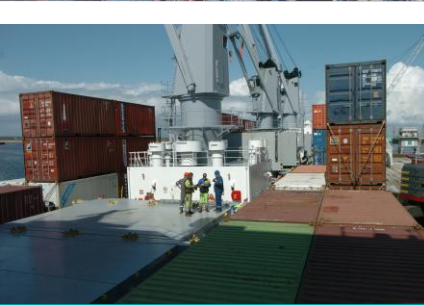
Sources / bronnen : extrait BD Cartho8 IGN EIGN 2006 - 01/06/2006



# European projects management

# Organisation Chart

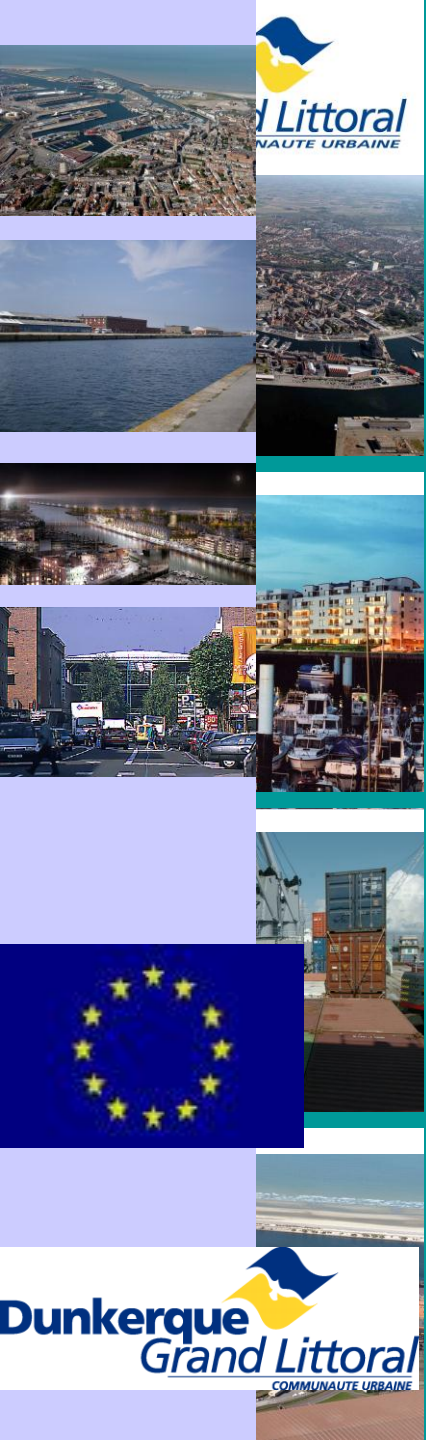




# Inside the Strategy, Partnerships, Europe and International Department

- Strategy and Partnerships Department :
  - Yann Capet
  - Hélène Deswarte
  - Nathalie Cos
  - Perrine Ezelin
  - Girard Aurélie
  - Pierre Roger
  - Mireille Verwicht
- International Relations Department
  - Rose-Anne Bisiaux
  - Stéphane Clerc
  - Pauline Dubois
  - Denise Dussaussois
  - Stéphanie Verbeke






# Role of the Strategy and Partnerships Department

- Project's choice :
  - Strategic overview of the programme, of the territory
  - Municipality handover
- Approved project :
  - Support the department involved

# Project choice



Reception of a project proposition sent by networks

Project discovered by the SPEIU




Is the project the most worthwhile for the territory?  
For the institution?



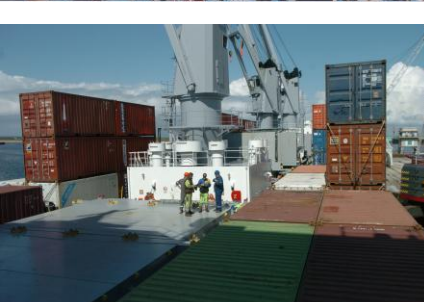
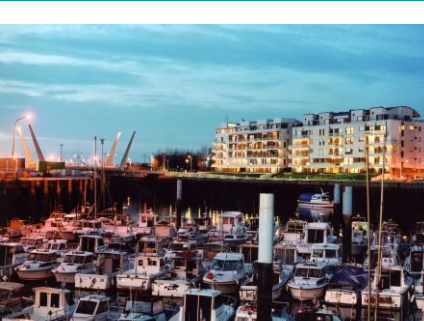
Contact the involved department  
Check the human, financial and administrative resources

Redaction of an official note to the political decision makers

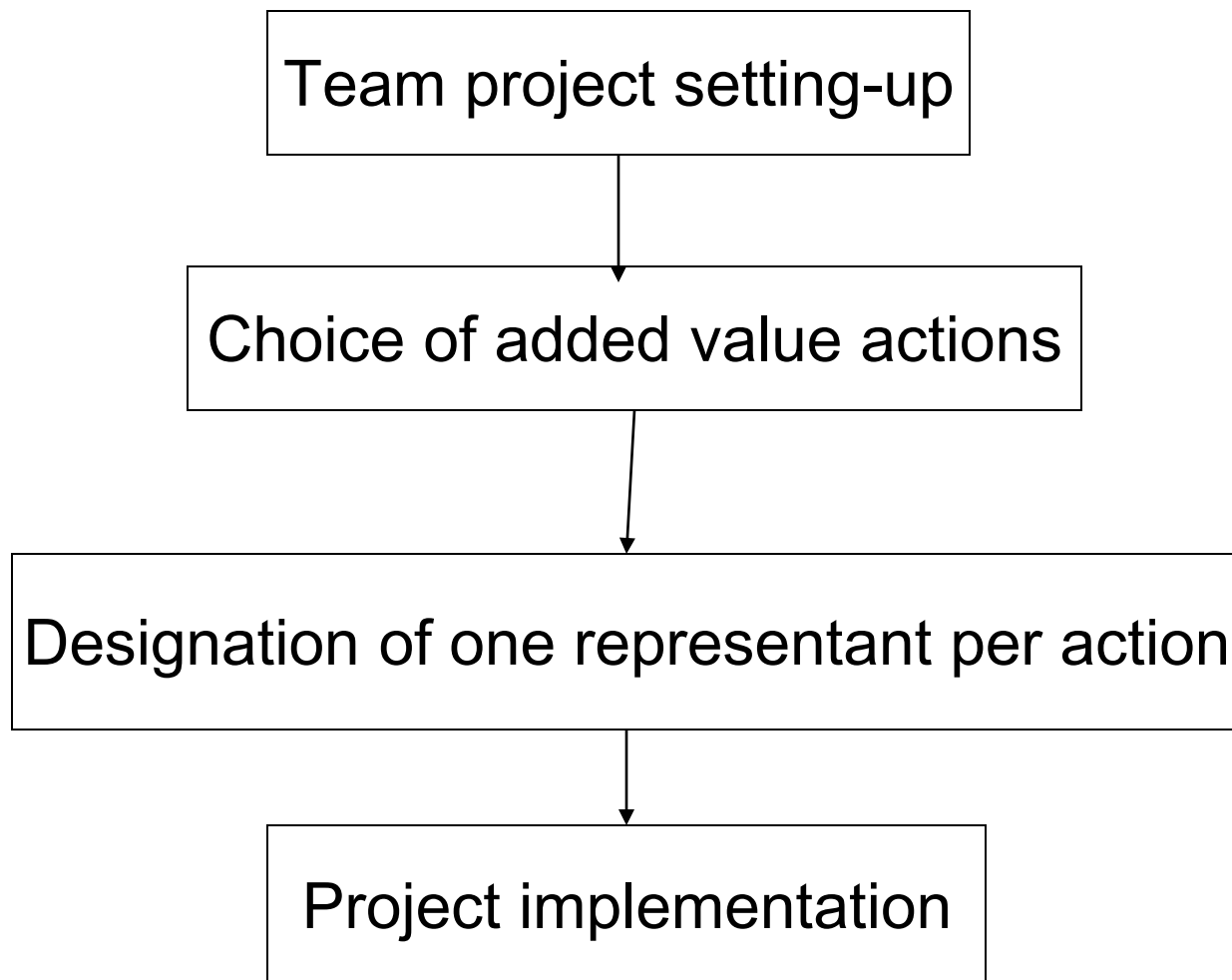


Approve the implication  
in the project

Reject the implication  
in the project



# Approved projects





# Thank you for your attention

## Further informations :

- [Nathalie.cos@cud.fr](mailto:Nathalie.cos@ cud.fr)
- [Hélène.deswarte@cud.fr](mailto:Hélène.deswarte@cud.fr)

